



Sunseeker Predator – Obladi

| | | | |
|------------|-------------------------|--------------------|------------|
| Make: | Sunseeker | Boat Name: | Obladi |
| Model: | Predator | Hull Material: | Fiberglass |
| Length: | 58 ft | Number of Engines: | 2 |
| Price: | USD 349,000 | Fuel Type: | Diesel |
| Year: | 1999 | Number: | 3450110 |
| Condition: | Used | | |
| Location: | Ft. Lauderdale, FL, USA | | |

Obladi

58 1999 Predator

Measurements

LOA: 58 ft

Atlantic Yacht & Ship, Inc. - Joe Marino

Atlantic Yacht & Ship, Inc., Harbour Towne Marina, 850 NE 3rd Street #213, Dania Beach, FL 33004, USA

Toll-free: 888-230-0439 Tel: 954-328-2059 Tel: (954) 921-1500 marinoj@bellsouth.net

Propulsion

Number of Engines: 2

Engine Make: Twin MANs

Engine Model: 10 Cylinder

Dimensions

Beam: 15

Max Draft: 4

Engines

Total Power: 1050

Cruising Speed: 32

Max Speed: 36

Tanks

Fuel: 725

Fresh Water: 170

Vessel Walkthrough

Like her big sister, the 63', the 58' Predator offers a three stateroom, two head layout with state-of-the-art construction, extraordinary craftsmanship and attention to detail common to all Sunseeker models. All interior woodwork, including cabinetry, counters, tables and storage lockers are done in a beautiful, light Bird's Eye Maple. The interior carpeting is in a complimentary beige pattern, with matching wall panels and headliner in Ultra-Suede for easy maintenance. The interior lighting look is achieved by the use of numerous, light-intensity halogen lights. All hardware is of the highest quality, in gold tones to accentuate the maple woodwork. Both heads feature teak flooring and the entry steps into the Salon are teak and holly. Entry into the Salon is a sliding, smoked acrylic door from the helmdeck area and down four teak steps with a glass handrail.

Salon

This outstanding main salon is full width. Framed nautical artwork and plant decor complete the interior decor of the salon. Bose Lifestyle 20 Hi-Fi system in lieu of standard.

- Marine Air digital air conditioner controls
- Curved sofa upholstered in white leather
- (2) ceiling ventilators with screens
- Breaker panel for electrical system
- Navy and gold checkerboard grid pattern drapes
- (4) hullside port lights

- Cabinets for storage

Galley/Laundry

- TV
- 2 burner Kenyon stove (concealed below lids in countertop)
- Whirlpool microwave oven
- Bose stereo system
- VCR
- Under counter storage
- Upper and lower storage cabinets
- Under counter Sub-Zero fridge and freezer
- Drawers

Master Stateroom

This master stateroom is in the bow and is separated from the other staterooms by the full width salon and galley. The stateroom has been customized and enlarged to offer a full vanity to starboard and more floor space for dressing, and additional drawer space.

- Centerline queen berth
- Television
- Make-up vanity
- Circular overhead hatch with cover
- Drawer storage below berth

Master Head

This head is concealed in a covered seating compartment.

- Large stall shower w/ smoked plexi-glass doors
- Faux blue marble sink
- Mirrored storage compartments
- Teak floor
- Hullside port lights with drapes
- Exhaust system (vents)

Guest Stateroom - Starboard

The custom bedding in this stateroom is a contemporary striped red, navy and gold pattern.

- Sony TV
- Air conditioning controls

- Phone system
- Custom bed covers with matching drapes and pillows

Guest Stateroom - Port

This stateroom has the added luxury of private access to the adjoining guest head and shower. This second guest stateroom is customized with a convertible suede sofa with a pullman berth, a large desk area and a separate washer and dryer area beneath. There is also a station for a computer.

- Sofa converts to rack berths
- Air conditioning controls
- Mirrored hanging locker
- Miele Novotronic washer W 1903
- Miele Novotronic dryer T1515

Navigation Station

- Robertson Simrad AP300x autopilot
- Furuno 851 48 mile radar
- Ungraded Simrad radar
- Shipmate RS8300 VHF radio
- ICOM K-M45 VHF
- SATCOM
- Full airconditioning at helm
- Morse throttles
- Hydraulic gangway
- Ritchie compass
- VDO depth finder and log
- Northstar 961 GPS/961XD plotter

Deck

- Wet bar and stove
- Hot and cold water shower on transom
- Cockpit mounted 6 man cannister life raft by BFA Marine
- Circular aft deck sun lounge over dinghy garage
- Pop-up dinghy cleats on stern
- Dinghy garage w/ power lift

- Passarelle electric boarding ladder
- Cockpit air conditioning
- Bow thruster
- Halon 1211 Fire control system
- U-shaped settee
- Hi-lo table in cockpit
- Cockpit coaming padding
- Bench companion helmseat
- Horn
- Windshield washers and wipers
- Wrap-around windshield w/ opening sliding panels on sides
- (4) cockpit stereo speakers (found mounts)
- Boat hook
- Cablemaster
- Engine room access hatch from cockpit
- Dockside water inlet
- Ice maker in cockpit

Engine Room

- Twin 1050 hp IB MAN 10 cylinder Diesels
- (2) Vacu-flush heads
- Kohler generator w/ soundshield
- Generator w/ silent exhaust
- Bow thruster
- Glendinning engine controls
- Fresh water cooling system
- Large raw water sea strainer
- Twin disc transmission w/ v-drives
- Large bilge blowers
- Sea Par fuel filters
- Water filtration system
- Halon fire extinguisher
- Extractor fan

Electrical System

- 110v/220v AC electrical system
- 12v/24v DC electrical system
- Battery bank
- Kohler 12.5kw generator
- (9) batteries
- Dockside electrical cable

Disclaimer

The Company offers the details of this vessel in good faith but cannot guarantee or warrant the accuracy of this information nor warrant the condition of the vessel. A buyer should instruct his agents, or his surveyors, to investigate such details as the buyer desires validated. This vessel is offered subject to prior sale, price change, or withdrawal without notice.

Photos



Photo 1



Salon



Salon



Galley



Galley



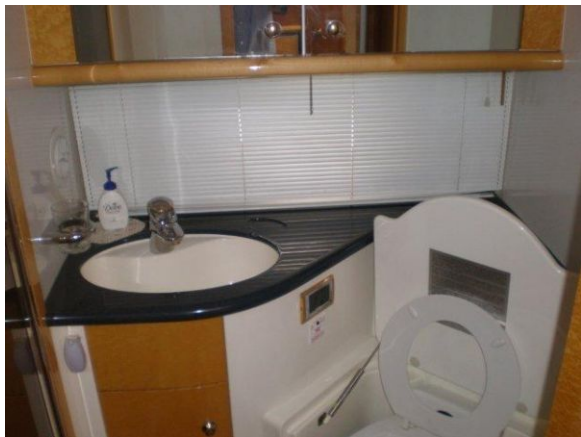
Master



Master



Master Bath



Master Bath



Guest



Guest



Guest



Helm



Cockpit



Cockpit



Cockpit



Cockpit



Cockpit



Cockpit



Deck



Deck



Deck



Deck



Deck