



Sunseeker 60 Manhattan – Johnny's Toy

Make:	Sunseeker	Boat Name:	Johnny's Toy
Model:	60 Manhattan	Hull Material:	Fiberglass
Length:	60 ft	Draft:	4 ft 11 in
Price:	USD 1,999,000	Number of Engines:	2
Year:	2011	Fuel Type:	Diesel
Condition:	Used	Number:	3449370
Location:	Annapolis, MD, USA		

Johnny's Toy

This 60' 2011 Sunseeker Manhattan's Twin MAN 1000hp engines and provides pace and space that family and friends can operate comfortably on their own. This vessel has a open main deck with a flowing walkway and seating areas blending the Salon and the Helm, all flooded by natural light and open views. Enhancing the openness of the upper deck, the galley is below on the lower deck, accessed by an attractive stairway to port of the helm station and its companion seating.

Atlantic Yacht & Ship, Inc. - Rick Obey

Atlantic Yacht & Ship, Inc., Harbour Towne Marina, 850 NE 3rd Street #213, Dania Beach, FL 33004, USA
Toll-free: 888-230-0439 Tel: 954-614-0519 Tel: (954) 921-1500 kmcmahon@ayssales.com

The three sleeping cabins, master, vip and twin cabin, share the same intrinsic qualities of fitting, finish, headroom and natural light. This vessel also has a crew cabin for one with its own head.

Up on the flybridge with its commanding helm station, sunpad, wetbar and large wraparound dining area, the emphasis on open-air comfort is clear, and the cooling shade of the Bimini Top is provided. beneath, the wheelhouse command center still connects with the outside world with a practical, starboard-hand Pantograph big-ship door that the sleek external styling all but conceals.

Measurements

LOA: 60 ft Displacement: 101706 lb
Beam: 16 ft 5 in
Max Draft: 4 ft 11 in

Propulsion

Number of Engines: 2
Engine Make: Twin MAN

Master Aft Stateroom

Double Berth
Cherry Gloss Woodwork
2 x Reading Lights 24v
Outboard Shelving
Bedside Cupboards
Dressing Table With Stool
Settee
Hanging Wardrobe With Mirrored Doors
Halogen Overhead Lighting 24v
2 x Large Opening Portholes & 4 fixed With Roman Blinds
2 x Double AC Socket
Flatscreen TV
CD/DVD
Cream Textured Fitted Carpet
5 x Scatter Cushions

Galley

Sink & Drainer
Refrigerator
Freezer
Washer/Dryer Fitted in Enclosed Cabinet
Close Board Teak Flooring
Ceramic Hob

Hob Extractor Fan
Microwave/ Combination Oven
Rubbish Bin
6 Place Crockery & Cutlery Set
Cupboard & Drawer Storage
2 x Double AC Socket
Hand-Held Fire Extinguisher
First Aid Kit

Deck

Hydraulic Telescopic Gangway 3.5 Meters With Teak Grate Walkway
Fittings all in Stainless Steel
8 x Deck Cleats in Stainless Steel
Additional Pair 10" Mooring Cleats Fitted to the Aft Lower Edge of the Hull Band Facing Aft
Delta Anchor & 45m Galvanized Chain
Electric Winch & Capstan 24v With Deck & Cockpit Controls 24v
Stemhead Roller & Anchor Stop
Self Draining Chain Locker-Fender Stowage
Pulpit & Cockpit Rails in Stainless Steel
Stainless Steel Fendering With Rubber Insert
IMCO Navigation Lights
2 x Pantograph Wipers 24v, Windscreen Washers
Ensign Staff & Socket
6 x Fenders & 4 Warps
Remote Spotlight 24v
Curved Safety Glass Windscreen

Main Helm Console

Upholstered Double Helm Seat in Black Leather
Hydraulic Steering
Wood Rimmed Steering Wheel
Radar/Plotter
Autopilot
VHF Radio Dual Station
Full Analogue Engine Instrumentation
Electric Speedlog
Depth Sounder
Rudder Indicator
Compass
Sanshin Twin Beam Remote Controlled Searchlight dual Station Control
Bow Thruster Control
Horn
Windscreen Wipers & Washers
Trim Tab Controls
Cigar Lighter
Opening Helm Side Door

Glass Holders
Hand-Held Fire Extinguisher

Crew Cabin

Cream Textured Carpet
Chrome Fittings
Air Conditioning 1 x 8000btu
Avonite Couter Top in Crew Head
Berth
En Suite Head

Starboard Guest Head/Day Head

Vacuum Toilet
Black Glass Counter Top
Cherry Woodwork
Chrome Shower Taps & Accessories
Washbasin
Separate Shower Compartment
Extractor Fan
Shaver Socket 240/110v
Mirrored Cupboard
Towel Rail
Bath & Hand Towels
Halogen Overhead Lights
Opening Porthole With Cherry Venetian Blind
Teak Amtico Flooring

Master Head

Vacuum Toilet
Black Glass Counter Tops
Cherry Woodwork
ChromeTaps & Accessories
Washbasin
Separate Shower Compartment
Extractor Fan
Mirrored Vanity Unit
Shelved Cupboard
Toothbrush & Glass Holder
Towel Ring & Towels
Halogen Overhead Light 24v
Opening Porthole With Mosquito Screen & Cherry Venetian Blind
Shaver Socket 240/110v
Teak Amtico Flooring

VIP Head

Vacuum Toilet
Avonite Counter Top
Cherry Gloss Woodwork
Chrome Shower Taps & Accessories
Washbasin
Separate Shower Compartment
Extractor Fan
Shaver Socket 240/110v
Mirrored Cupboard
Towel Rail
Bath & Hand Towels
Halogen Overhead Lights
Opening Porthole With Cherry Venetian Blind
Teak Amtico Flooring
Door to Stateroom

Salon

Cherry Gloss Interior
Large Dining Area With Folding Dining Table
Lower Salon Seating
Stainless Steel Sliding Cockpit Door to Aft Deck
Drinks Cabinet
Flatscreen TV
BOSE Lifestyle 48 DVD Hi-Fi Surround System
CD/Radio for External Speakers
Halogen Overhead Lighting 24v
2 x Double AC Socket
Main Switch Panel (AC/DC) With Circuit Breaker Protection & Generator Controls
6 x Scatter Cushions
Cream Fitted Carpet

Aft Cockpit

Teak Folding Cockpit Table on Removable Telescopic Leg
Self-Draining
Moulded Staircase to Flybridge
Transom Storage Locker
Upholstered Seating
Transom Safety Door
Engine Room Access Hatch
Overhead Lighting 24v
Low-Level Courtesy Lighting 24v
2 External Speakers
Teak Flooring & Steps
Boat Hook
Hand-held Fire Extinguisher

Flybridge Helm Position

Black Canvas Bimini Top With Stainless Steel Frame Work
Ceramic Electric Fluted Griddle
Electric Cooling Unit for Cool Box
Waterproof Cockpit Carpet in Gray
Self-Draining
Deflecting Screen (Acrylic)
Hydraulic Steering
Wood Rimmed Steering Wheel
Duplicate Engine Controls & Instrumentation
Compass
Trim Tab Control
Echo Sounder & Speed Log Repeaters
Bow Thruster Control
Autopilot & GPS Navigator Controls
Instrument Cover
White Upholstered Seating
Storage Below Seats
Cockpit Table
Forward Sunbathing Area
Stainless Steel Guard Rails & Grab Rails
Glass Holders
Radio/ CD remote Control
2 External Speakers
Low-Level Courtesy Lights

Starboard Guest Cabin

2 x Single Berths
Bedside table With Drawer
2 x Reading Lights
Under-Berth Stowage
Full Hanging Wardrobe
Halogen Overhead Lights
Opening Porthole With Mosquito Screen & Curtain
Double AC Socket
Door to En Suite Head
Flatscreen TV
Fitted Carpet

Forward VIP Stateroom

Double Berth
Drawers & Storage Beneath
Wardrobe With Mirrored Doors
Halogen Overhead Lights 24v
2 x Opening Porthole With Mosquito Screens & Curtains
Deck Hatch With Screen

Double 240v AC Socket
Door to En Suite Head
Flatscreen TV
Fitted Carpet

Bathing Platform

Fresh-water Marina Connection
Dockside AC Shore Power Connection
Hot & Cold Swimming Shower
Teak Flooring
Foldaway Stainless Steel Swimming Ladder
Hydraulic Lifting Platform

Construction

White Hull
White Deck
Black Hull Band
Hand-Laid GRP
Isophthalic Polyester Skin Coat With Powerbound Mat
Stitched Multi-axial Reinforced Single Skin Bottom
Hull Stiffened With Longitudinal Stringers Supported by Transverse buckheads & Floors
Antifouling

Engine Compartment & Ancillaries

Built to US Coast Guard Regulations & specifications
Twin MAN 1000hp Engines
2 x Separate Fuel Filters Water Separators
1 x Fuel Tank With Electric Sender Unit
Fresh-water Engine Top-up Hose
Sound insulation Throughout Engine Room
Automatic Fire Extinguisher
2 x Automatic Bilge Pumps
1 x Automatic Flood Pump
Bilge Water High-Level Alarm
Extractor Fans 24v
Manual Bilge Pump
Stern Thruster - Sleipner 10.7 hp
Glendinning Cablemaster

Underwater Gear

Direct Shaft Drive Through Half Tunnels
4-Bladed NAB Bronze Propellers
Bronze P-Brackets
2 x Stainless Steel Shafts
Dripless Shaft Logs

High-Performance Bronze Rudders and Struts
Seawater Strainers - 2 x Main Engines/ 1 x Generator
Seacocks on all Underwater Fittings
Bow Thruster 24v
Stainless Steel Trim Tabs (Hydraulic)
Full Cathodic Bonding System to Zinc Anodes

Systems

Aluminium Fresh-water Tank
24v Fresh-water Pressure System
Hot Water Tank
24v Vacuum Toilet System

Miscellaneous

Tool Kit
Boat Hook
4 x Mooring Ropes
6 x Fenders
Spare Bulbs & Fuses
2 x Towel Sets

Electrical System

Kohler Generator 15.5 kw at 60hz With Underwater Silent Exhaust
Low Level White LED side Deck Lights 8 per side
Glendinning Cablemaster - 1 x Power Feed & Recovery of AC Shorepower Cable
Stern Thruster - Speipner 10.7 hp
Ceramic Electric Fluted Griddle on Flybridge
Electric Cooling Unit for Cool Box on the Flybridge
Air Conditioning Installation 1 x 8000 btu in the Crew Cabin
4 x Aqualuma White LED Wide Angle Series 6 White LED Underwater Lighting
AC Dockside Connection
Main DC & AC Electrical Circuits Protected by RE-Settable Circuit Breakers
Systems Monitoring Panel
Galvanic Isolator
6 x Batteries for Engine Starting 24v Circuit
4 x Batteries for Domestic Power 24 Circuit
2 x Batteries for Generator Starting 12v Circuit
Battery Coupling System
Battery Switches Controlled From Locker in Cockpit
Alternator Split Charging System
Battery Charger for 24v Circuits
Battery Charger for 12v Circuits

Water Heater
AC Outlet Sockets Throughout the Boat
24v Hand Light & Cable

Photos



Main Shot



Port Side Shot



Port Side Shot



Starboard Side Shot



Salon



Salon



Salon



Salon Dining



Salon



Salon



Salon



Salon



Helm



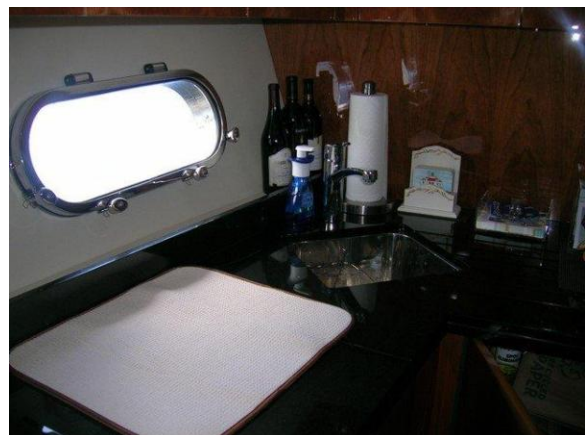
Stairway



Stairway



Stairway



Galley



Washer/Dryer



Galley



Refrigerator



Hallway



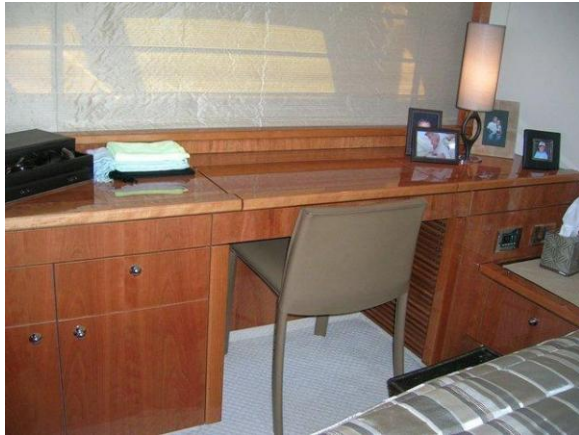
Master Stateroom



Master Stateroom



Master Stateroom Seating



Master Stateroom Desk



Master Head



VIP Stateroom



VIP Stateroom



VIP Head



Crew Cabin



TV



Deck