



Sunseeker Predator – SERENITY

Make:	Sunseeker	Boat Name:	SERENITY
Model:	Predator	Hull Material:	Fiberglass
Length:	62 ft	Draft:	5 ft 1 in
Price:	USD 1,599,000	Number of Engines:	2
Year:	2009	Fuel Type:	Diesel
Condition:	Used	Number:	3450770
Location:	Fort Lauderdale, FL, USA		

SERENITY

\$300,000 price reduction!!

This stunning 62 Predator is ready for her next owner! Black/silver paint and much more!

A must-see for the performance boat buyer!!

Atlantic Yacht & Ship, Inc. - Rick Obey

Atlantic Yacht & Ship, Inc., Harbour Towne Marina, 850 NE 3rd Street #213, Dania Beach, FL 33004, USA

Toll-free: 888-230-0439 Tel: 954-614-0519 Tel: (954) 921-1500 kcmahon@ayssales.com

- Antifouling
- Trim tabs
- Stainless steel sliding door to cockpit
- Flatscreen televisions in all cabins
- Hi-fi DVD/CD surround system
- CD player for cockpit
- Electric winch with deck and cockpit controls
- Hot and cold swimming shower
- Swimming ladder
- Full wet bar with Icemaker, griddle, cool box and sink with hot and cold water
- Foot level courtesy lighting
- Radar, autopilot, electric speedlog depth sounder, and
- VHF radio
- Hydraulic power steering

Master Stateroom

AFT

- Double berth
- Cupboard and drawer stowage
- 2 x reading lights 24v
- Bedside drawers
- Walk in wardrobe
- Halogen overhead lights 24v
- Walnut vanity top w/ Winston chocolate vanity stool
- Bose 321 Series II CD/DVD Cinema Surround sound system linked to TV
- Dimmer switches on interior lighting
- Additional AC 110v single socket
- Square Central ceiling
- Automatic Wardrobe lights
- 2 x large opening and 4 fixed portholes with mosquito screens and curtains
- Double AC socket
- Door to shower room
- Fitted carpet
- Flat screen television

- Outboard shelving
- Chrome fittings
- Walnut wood finishes
- Roof feature panel-Shadowbox Woodland
- Square fiddles
- Safe - 2 brick w/ digital lock

Master Head

AFT

- Washbasin
- Taps and accessories
- Hot and cold water
- Separate shower compartment
- Vacuum toilet
- Extractor fan
- Crema Marfil countertop
- Chrome fittings
- Walnut wood finishes
- Shelved cupboard
- Toothbrush and glass holder
- Towel ring
- Overhead light
- Opening porthole with mosquito screen and venetian blind
- Razor socket 240/110v
- Soap dish
- Crema Marfil flooring

VIP Stateroom

FORWARD

- Double berth
- Stowage beneath
- Drawer in base-end
- 2 reading lights 24v
- Outboard shelving

- Overhead bedside cupboards
- Hanging wardrobe with mirrored doors
- Deck hatch w/ mosquito screen
- Square fiddles
- Satin finish walnut wood finishes
- Automatic Wardrobe lights
- Shelved cupboard
- Halogen overhead lights 24v
- 2 x opening portholes with mosquito screen and curtains
- Double AC socket
- Door to shower room
- Fitted carpet
- Flat screen television
- Chrome Fittings
- Dimmer switches on interior lighting
- Walnut venetian blinds

Guest Head

FORWARD

- Washbasin
- Tap and accessories
- Hot and cold water
- Separate shower compartment
- Vacuum toilet
- Extractor fan
- Mirrored vanity unit w/ Crema Marfil countertop
- Chrome fittings
- Walnut wood finishes
- Shelved cupboard
- Toothbrush and glass holder
- Towel ring
- Overhead light
- Opening porthole with mosquito screen and walnut venetian blind
- Razor socket 240/110v

- Soap dish
- Crema Marfil flooring

Guest Cabin

STARBOARD

- (2) Single berth Pullman bunks
- Mirrored wardrobe door
- Chrome fittings
- Fitted carpet
- Automatic Wardrobe lights
- Dimmer switches on interior lighting
- Walnut wood finishes
- Square fiddles
- Venetian blind

Deck Salon

- Walnut dining table
- Acadia Truffle dining seats
- Stowage beneath seats
- Television
- Bose Lifestyle 48 DVD/CD Surround System
- Cupboards
- Hand-held fire extinguisher
- Air conditioning 2 x 16000 BTU
- Wenge Amtico cabin stair treads w/ non slip tape from Deck Salon to lower decks
- Wenge Amtico floo
- Walnut bar top
- Chrome Fittings
- Square fiddles
- 110v outlet at helm
- Air Conditioning Tropical spec 2 x 16000 BTU 1 x 12000 BTU
- Carpet
- Overhead halogen lighting 24v
- Sliding door with curtain

- Chrome cupboard door catches
- Scatter cushions
- Oceanair pleated blinds for side windows
- Electrically operated side opening window at helm
- Square central ceiling panel
- Dimmer switches on interior lighting
- Creama Marfill Limestone Top on the port side cabinet
- Acadia Truffle Tub style chair with curved back
- Diamond Champagne Vinyl to Windscreen Eyebrow
- Chocolate Leather helm seat and navigator seat
- Walnut -satin finish TV bar top
- Black Vinyl Mullions and upstand

Breakfast Salon

- Walnut-satin finish table that converts into occasional berth w/ in-fill cushion
- Chrome Fittings
- Fitted carpet
- Dimmer switches on interior lighting
- Square fiddles
- Acadia Truffle seating
- Walnut venetian blinds
- Walnut- satin finish overhead locker doors
- Scatter cushions

Galley

- Sink and drainer
- 2 ring ceramic hob
- Electric refrigerator
- Electric freezer
- Microwave/Grill
- 110v Coffee maker
- Hot and cold water
- Rubbish bin
- Wenge Amtico flooring

- Crema Marfil countertop
- Dimmer switches on interior lighting
- Coffee maker
- Cupboard and drawer storage
- Drinks cupboard
- 6 place crockery set
- 6 place cutlery set
- Double AC socket
- Hand-held fire extinguisher
- First aid kit
- Walnut wood finishes
- Uline Wine cooler fitted in the dishwasher space
- Chrome Fittings
- Square fiddles

Helm Console

- Double stand/sit and co-pilot seat
- Storage beneath helm seats
- Chart area
- Console with burr type walnut fascia
- Hydraulic power steering
- Wooden rimmed steering wheel
- Full analogue engine instrumentation
- Radar open scanner
- Furuno NavNet 19440 10.4" Color LCD radar/plotter (4ft open scanner)w/ GPS antenna
- Simrad pilot fast heading capability junction box
- Electronic speed log
- Depth sounder
- Hand-held fire extinguisher
- Black Sanshin Twin Beam remote controlled Searchlight HR-1012
- Rudder indicator
- Water tank gauge
- Fuel tank gauge

- Icom M602 waterproof combined Fixed DSC VHF
- Single lever engine controls
- Compass
- Waterproof plug and socket
- Horn
- Windscreen wipers and washers
- Glass holders
- Furuno network sounder option w/ transducer connected to 10" Navnet displays
- Furuno Navnet GD-1920C 10.4" color LCD plotter interfaced to the 1944C
- Carbon fibre dash panel w/ black leather wheel

Deck

- Chaffing bars for all mooring cleats
- Antifouling: Black
- Additional pair 10" Mooring Cleats fitted to the aft edge of the hull band below the hull/deck joint facing aft
- Stainless steel raised radar chair for the MES fitted KVH domes with radar antenna and domes
- Fittings all in stainless steel
- 8 x stainless steel deck cleats
- Pulpit and cockpit rails
- Stainless steel fendering with rubber insert
- Curved safety glass windscreens
- Stainless steel bow roller with anchor stop
- Stainless steel bow plate
- General Ecology Nature Pure Ultrafine Water purifier for the Icemaker - with spare cartridge supplied
- Black Antennas and spotlight
- Electric winch and capstan with deck and cockpit controls
- Chain locker-fender stowage
- Fender tie bar under anchor locker lid
- Fuel fillers - port and starboard
- Fresh-water filler
- IMCO navigation lights

- 2 x pantograph windscreen wipers and washers
- Ensign staff and socket

Bathing Platform

- Teak-laid bathing platform and steps
- Hot and cold swimming shower
- Fresh-water marina connection
- Dockside AC shore power connection
- Stainless steel swimming ladder
- Hydraulic lifting platform

Aft Cockpit

- Self-draining
- Stern safety door
- Wet bar sink with hot and cold water, cool box, ice maker, & locker
- Electric BBQ grill
- Stern docking winches
- Additional AC 110v single socket in wetbar cupboard
- Additional AC 110v single socket by sliding door
- Reticulated foam for exterior cushions
- Black accent under arch
- Electronic canopy
- Lockers beneath seating
- Cockpit carpeting
- Teak Decking
- Overhead cockpit lights 24v
- Low-level courtesy lights 24v
- Engine room access hatch
- Boat hook
- Convertible sunbather
- Upholstered seating around cockpit table

Engine Compartment and Ancillaries

Built to US Coast Guard Regulations & Specifications

- Twin MAN engines
- Soundproofing throughout engine room
- 1 x fuel tank with electric sending unit
- Separate fuel filters/water separators
- Automatic fire extinguishers
- Stern thruster - Sleiper SP155TCi-24V - 10.7hp
- Kohler generator 15.5kw
- Engine room and forward bilge flood alarms
- 2 x automatic bilge pumps
- 2 x automatic flood pumps
- 4 x extractor fans 24v
- Manual bilge pumps

Electrical System

- AC dockside connection
- Galvanic isolator
- 24v and 12v DC electrical system with full circuit breaker protection
- 6 x engine batteries 24v circuit
- 4 x domestic batteries 24v circuit
- 2 x generator batteries 12v circuit
- Electric Canopy for aft cockpit
- One camera in engine room and one camera looking aft from radar mast linked to Furuno Navnet
- Bow Thruster - Sleipner SP155TCi-24V - 10.7hp
- Bose Lifestyle 48 DVD/CD Surround System
- Electrically operated side opening window at the helm
- Glendinning Cablemaster - 1 x power feed and recovery of AC shorepower cable
- Aqualuma white LED wide angle underwater lighting x 6 - (2 port, 2 transom, 2 stbd)
- KVH Sat M7 sat TV system with decoders in all cabins
- Alternator split charging system
- Remote battery switches controlled from locker in cockpit
- Battery charger for 24v circuit
- Battery charger for 12v circuit
- Water heater

- AC sockets through out the boat
- 24v hand light and cable
- Furuno Network Sounder option with transducer connected to 10" Navnet displays
- Air Conditioning Tropical spec 2 x 16000 BTU 1 x 12000 BTU in the Deck Saloon
- Electric BBQ Grill
- Dimmer switches on interior lighting in the Deck Saloon, in the Galley, in the Breakfast Saloon, in the Forward Cabin, in the Starboard Guest Cabin and in the Aft Master Stateroom
- Electronic portable engine controls with plug in extended lead
- 110V outlet at Helm in the Deck Salon
- Washer/Dryer in locker under companionway steps
- KVH Trackphone FB250 Fleet broadband Satcom system

Underwater Gear

- Direct shaft drive through half tunnels
- 4-blade NAB bronze propellers
- Bronze P-brackets
- Stainless steel Temet 25 shafts
- Dripless shaft logs with spare seal
- High-performance bronze rudders and struts
- Seawater strainers: x 2 main engines, 1 x generator
- Seacock on all underwater fittings
- Full cathodic bonding system to zinc anodes
- Stainless steel hydraulic trim tabs 24v

Systems

- Hydraulic power steering engine driven pump
- 24v hydraulic power pack for trim tabs and platform
- Aluminum fresh-water tank with electric sending unit
- 24v fresh-water pressure system
- Hot water tank

Miscellaneous

- Tool kit
- Boat hook

- 4 x mooring ropes
- 6 x fenders
- Spare bulbs and fuses
- 2 sets of towels

Exclusions

Owner personal items

Disclaimer

The Company offers the details of this vessel in good faith but cannot guarantee or warrant the accuracy of this information nor warrant the condition of the vessel. A buyer should instruct his agents, or his surveyors, to investigate such details as the buyer desires validated. This vessel is offered subject to prior sale, price change, or withdrawal without notice.

Photos



Photo 1



Retractable roof



Helm 1



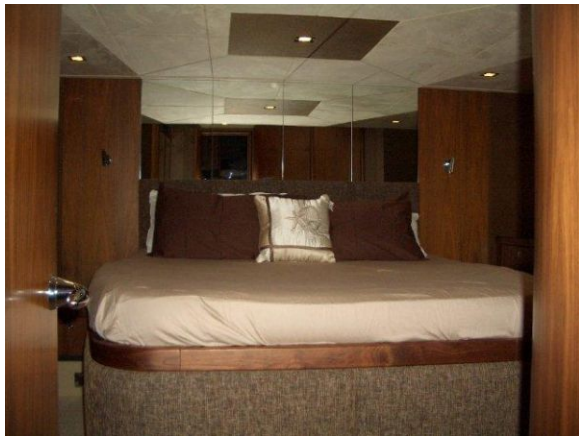
Helm 2



Salon 1



Salon 2



Master Stateroom



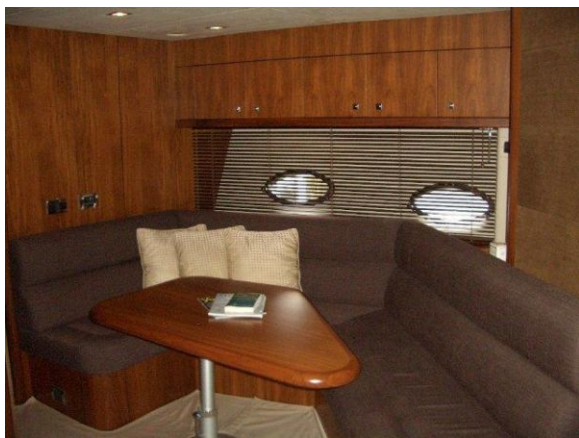
Head



VIP Stateroom



Guest Cabin



Breakfast Salon



Galley



Galley



Washer/Dryer



Side view



Bow



Stern